

The **PACE** Precinct

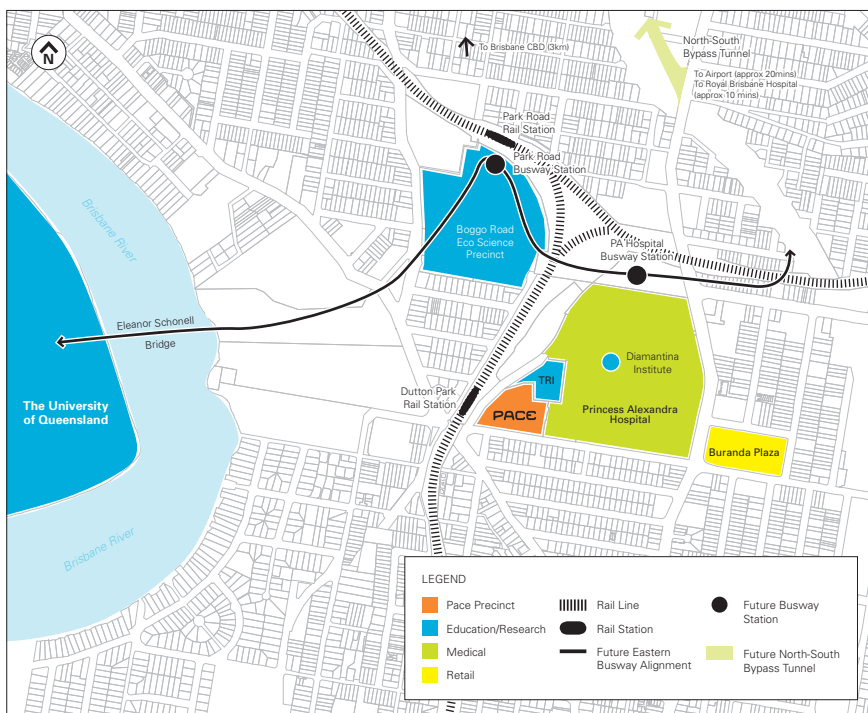
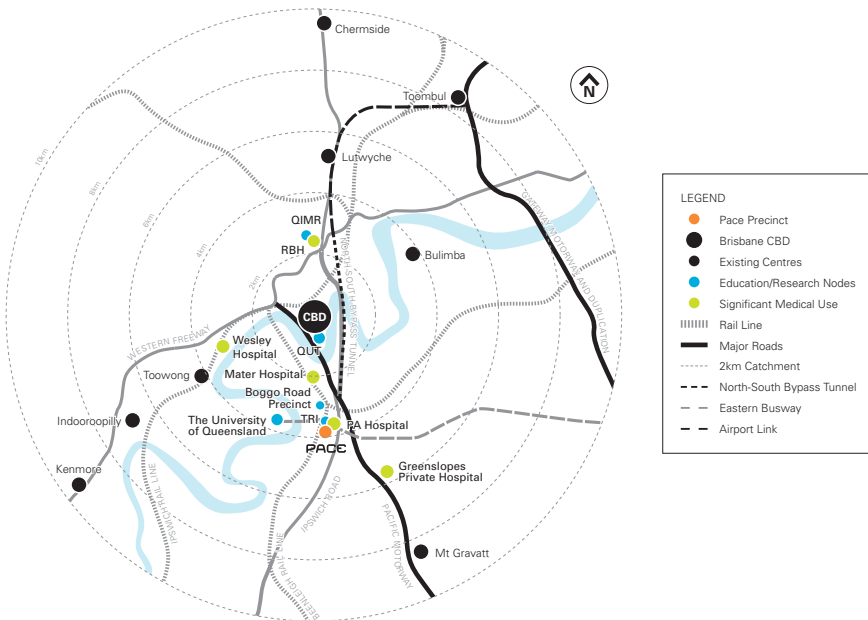
FACT SHEET 1

FEB '09

Pharmacy Australia Centre of Excellence (PACE)
Princess Alexandra Hospital (PAH)
The University of Queensland (UQ)
Translational Research Institute (TRI)
BioPharmaceuticals Australia (BPA)

Pharmacy Australia Centre of Excellence (PACE) is a **world-class research, education, clinical practice and industry precinct** which, over the next five years, will grow to house more than 2000 researchers, clinicians and biopharmaceutical businesses.

PACE is the vision of the **University of Queensland (UQ)** and the **Queensland Government** to create Australia's leading precinct for biotechnology and biotherapeutic research and development, on the doorstep of the **Princess Alexandra Hospital (PAH)** – one of Australia's leading teaching and research hospitals.



PRECINCT

UQ School of Pharmacy (UQ)

200+ researchers/staff
16,000sqm commercial

Translational Research Institute (TRI)

Ian Frazer's Diamantina Institute
Mater Medical Research Institute
600+ researchers/staff

Biopharmaceuticals Australia (BPA)

GMP biopharmaceutical scale up

Princess Alexandra Hospital (PAH)

650+ medical doctors
Approximately 750 beds

PACE has secured the only commercial space available in this growing biopharmaceutical precinct. Businesses within the PACE Precinct will benefit through engagement with UQ's world-leading research teams, co-location with other like-minded businesses, and collaborative opportunities with clinicians through the PAH.

PACE is a joint-venture between **The University of Queensland** and **Alba Capital Partners**.

Custom-built Infrastructure for 2010-2012

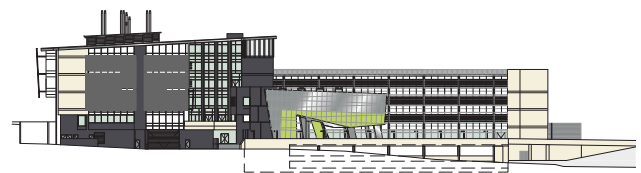
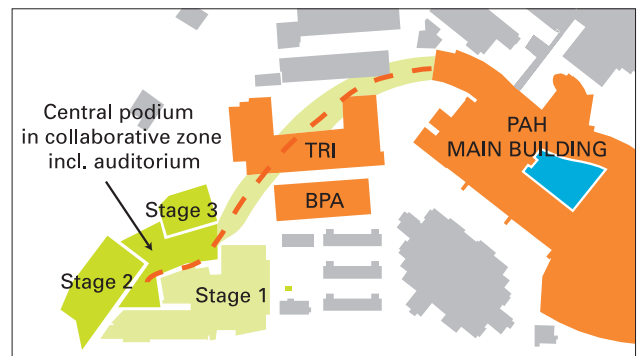
As the only commercial space offered within the precinct, PACE provides private, purpose-built spaces across flexible floor plates. Commercial opportunities are available now in Stages 2 and 3, which are scheduled for completion over the next three years.

PACE features include:

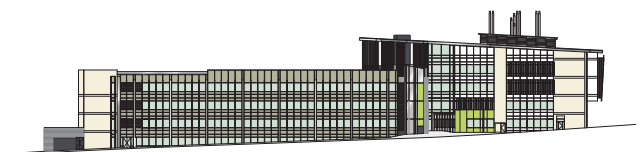
- Flexible commercial and laboratory space
- Capacity for expansion over time
- Opportunity to use shared meeting and event facilities within the collaborative zone; and
- Extensive rail, bus, bike and pedestrian links with new tunnel access to the airport.

Locating to PACE will allow:

- A one-off opportunity to co-locate bioscience and pharmacy-related enterprises within a vibrant health sciences precinct.
- By combining education, research, industry and clinical practice, PACE will embrace the traditional and developing pharmacy industries.
- UQ's School of Pharmacy is internationally-recognised for its research achievements in the areas including Quality Use of Medicines, therapeutic targeting and clinical studies modelling and will be the only pharmacy school co-located within an industry precinct.
- An inner-city location, on a 1.7ha site 4km from Brisbane's CBD, the PACE precinct is close to transport routes and quality community facilities, and is within walking distance of UQ's St Lucia campus and its major facilities.
- Through PACE, UQ will help industry to establish successful relationships with its embedded research teams across the PAH, TRI, IMB and its other high performing research centres.



PACE Stage 1 – North Elevation



PACE Stage 1 – South Elevation

SITE PLAN

Specific details of PACE are as follows:	FLOOR PLATE	TOTAL FLOOR AREA
STAGE 1 PACE (fully leased)		
UQ School of Pharmacy (<i>Construction due for completion late 2009</i>)		16,000sqm
STAGE 2 PACE (leasing opportunities available)		
Commercial Office Space and Laboratories (<i>Due for completion in 2011/2012</i>)	Approx 2,000sqm	10,000sqm
STAGE 3 PACE (leasing opportunities available)		
Commercial Office Space and Laboratories (<i>Due for completion in 2012/2013</i>)	Approx 1,100sqm	15,000sqm
	TOTAL	41,000sqm